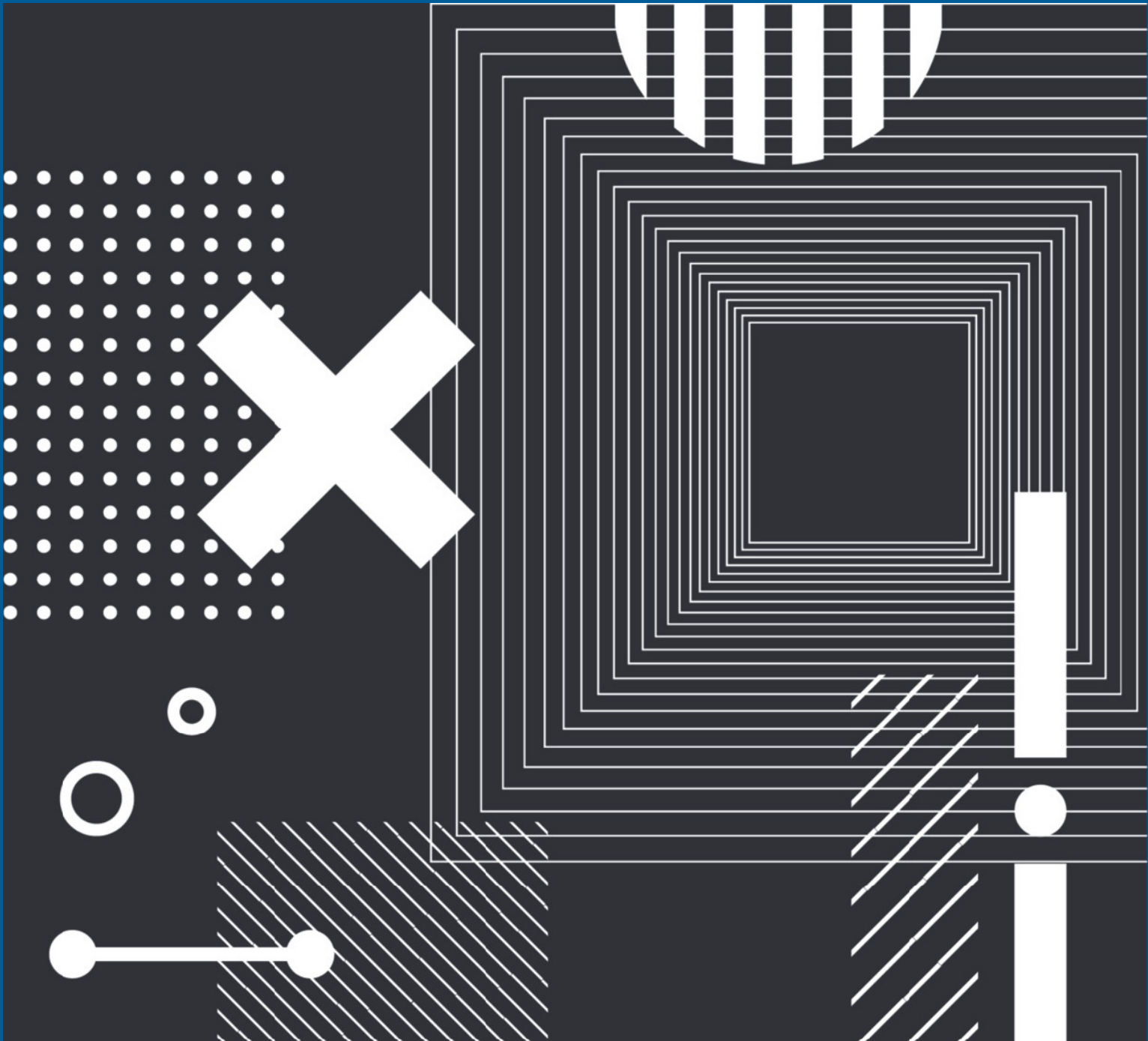



# HOW TO CHOOSE THE RIGHT IT PARTNER

A Guide for Business Owners, CEOs, and Growing Teams

Powering your potential. Securing your success.





Choosing an IT partner is one of the most important decisions for your business. The right partner protects your systems, empowers growth, and gives you peace of mind.

At Titan IT Management, we don't just manage tech — we power your potential and secure your success.

In this guide, we'll walk you through the key areas you should evaluate when selecting an IT provider. Each section includes what to look for, what to avoid, and why it matters — so you can make a confident, informed decision that protects your business.

We'll go over:

- Core services and support models
- Cybersecurity essentials
- Communication & responsiveness
- Strategic planning & scalability
- Vendor and tech stack management
- Red flags to avoid
- And why Titan IT could be the partner you've been looking for

Let's dive in — and help you choose IT support that powers your potential and secures your success.





# Look for Proactive Support, Not Just Fixes

The best IT partners prevent problems before they happen — not just fix them after.

Ask:

- Do they offer 24/7 monitoring and regular updates?
- Are they focused on long-term reliability?
- Will they help your business scale with confidence?

Not all IT providers offer the same level of service. Evaluating their core offerings ensures you're getting proactive, full-scope support — not just someone who shows up when things break.

## Prioritize Cybersecurity — Not Just Compliance

A secure business is a stable business. Ask providers:

- Do you offer real-time threat detection, backup, and endpoint protection?
- What's your incident response plan?
- Are cybersecurity services included or extra?

Cyber threats don't discriminate — and small businesses are prime targets. A good IT partner should lead with security, not treat it like an add-on.

At Titan IT, protection comes standard. We secure your success — not just your files





# Evaluate Communication & Responsiveness

You deserve a partner who responds — fast and clearly

Ask:

- How fast are emergency requests answered?
- Do you get a dedicated account manager?
- Will you get guidance on budgeting and IT planning?

When systems go down, every second counts. Fast, clear communication builds trust — and ensures problems are solved quickly and confidently.

## Strategy & Scalability

Your IT should grow with your business.

Look for:

- Growth-focused planning (not just break/fix)
- Hybrid workforce support
- Wireless backup internet (like Titan Wireless Broadband)

Your business will evolve. Your IT must, too. Choose a partner that can scale with you, adapt to hybrid work, and plan for long-term growth.

We're not just reactive — we're your growth partner.



# Tools & Vendor Management

A great IT partner simplifies your tech — not complicates it.

Ask:

- Do they manage your software, internet, cloud, and devices?
- Will they consolidate vendors to save you time and money?
- Are their tools secure and enterprise-grade?

Juggling multiple tech vendors is time-consuming and frustrating. A strong IT partner simplifies everything — offering one point of contact and one support system.

## Red Flags

Spotting warning signs early can save you from costly downtime, unexpected fees, and lackluster support. Know what to walk away from — before you commit.

Watch Out for:

- Vague pricing or bundled "gotchas"
- No clear cybersecurity plan
- Slow response or hidden downtime
- One-size-fits-all contracts



# Why Choose Titan IT?

At Titan IT Management, we believe your success starts with smarter systems, secure infrastructure, and a team that's truly on your side.

Veteran-Owned & Operated  
All-in-one cybersecurity + support + wireless backup  
Proactive, strategic, human-centered service One  
call. One partner. Every solution.

You need more than just a vendor. You need a partner who understands your business, prioritizes security, and works proactively to power your growth.

## Powering your potential. Securing your success.





Your IT provider isn't just someone who fixes problems — they're the foundation of your business's productivity, security, and growth. Choosing the right partner now can save you time, money, and major headaches down the road.

Whether you're looking to scale your systems, tighten your security, or finally get support that actually supports, the key is asking the right questions upfront.

To help you take action, we've included a free printable checklist with this guide. Use it during your next IT evaluation or strategy call — and keep it handy as a reference for red flags, deal-breakers, and must-have services.

If you're ready to stop reacting and start leading your tech strategy, we're here to help.

# Thank You!



~ Call Titan IT Management at  
772-279-6180  
~ Visit us at [titanitmgmt.com](http://titanitmgmt.com)  
Veteran-Owned | Always On |  
Powering your potential. Securing  
your success.

# FREE GUIDE: HOW TO CHOOSE THE RIGHT IT PARTNER

Brought to you by **TITAN IT MANAGEMENT**

## CORE SERVICES AUDIT

- ☐ Do they offer proactive monitoring – not just break/fix services?
- ☐ Are cybersecurity services included in their base package? Do they offer both remote and on-site support?

## QUESTIONS TO ASK POTENTIAL IT PROVIDERS

- ☐ What's your average response time for support tickets?
- ☐ How do you handle cybersecurity threats and data backups?
- ☐ Will we have a dedicated point of contact or account manager?
- ☐ Do you support IT compliance like HIPAA, PCI, or NIST?
- ☐ How do you help a growing business scale its IT needs?

## SECURITY & RELIABILITY CHECKLIST

- |  |  |
|--|--|
| <input type="checkbox"/> Regular patching & system updates       | <input type="checkbox"/> 24/7 system monitoring                                      |
| <input type="checkbox"/> Multi-layered cybersecurity protections | <input type="checkbox"/> Encrypted data backups                                      |
| <input type="checkbox"/> Documented disaster recovery plan       | <input type="checkbox"/> Wireless backup internet options (Titan Wireless Broadband) |
| <input type="checkbox"/> Secure remote access and support        |  |



Schedule a FREE IT Strategy Call:  
772-279-6180  
[titanitmgmt.com](http://titanitmgmt.com)

Vague or confusing pricing  
No written cybersecurity policies  
Limited support hours  
One-size-fits-all